



# RL-3316-HC

## UNSHIELDED ULTRA HIGH CURRENT

### DESCRIPTION

- Unshielded High Current SMD Inductor

### ENVIRONMENTAL DATA

- Storage temperature range: -55°C to +130°C
- Operating temperature range: -40°C to +130°C

### PACKAGING INFORMATION

- Packaging information: pg. 489

### FEATURES & APPLICATIONS

- Low cost, high performance inductor
- Super low resistance with high current rating
- Excellent as DC-DC converter used in notebook computers and step-up or step-down converters

Verify operation with sample in actual circuit. Order samples at [www.rencousa.com](http://www.rencousa.com).

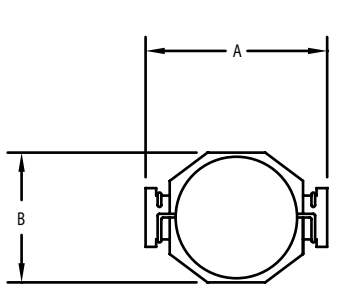
### MECHANICAL DIMENSIONS

U.S. Standard (mm)

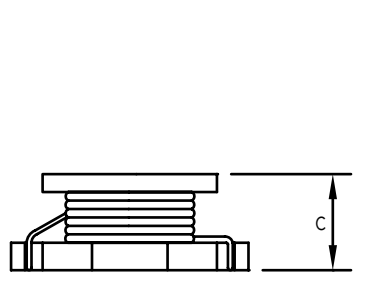
PART NUMBER	A (MAX.)	B (MAX.)	C (MAX.)	D (REF.)	E (REF.)	F (REF.)
RL-3316-HC	0.531 (13.50)	0.390 (9.91)	0.250 (6.35)	0.071 (1.80)	0.197 (5.00)	0.329 (8.36)

PART NUMBER	PART WEIGHT
RL-3316-HC	1.0g (0.035oz)

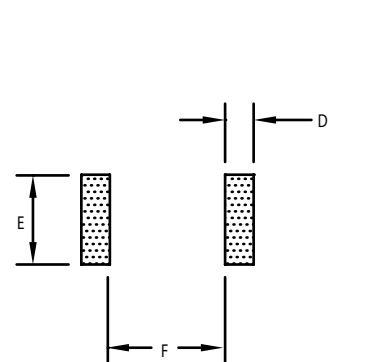
TOP VIEW



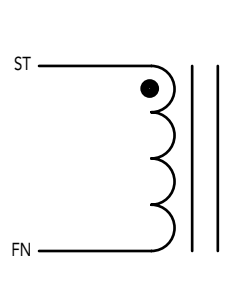
SIDE VIEW



RECOMMENDED LAND PATTERN



SCHEMATIC



**RECO ELECTRONICS INC.**

595 International Place, Rockledge, FL 32955-4200 USA • [www.rencousa.com](http://www.rencousa.com) • ISO 9001 Certified  
Toll Free Engineering Hot Line: 800.645.5828 • P: 321.637.1000 • F: 321.637.1600



# RL-3316-HC

Renco Part No. RL-3316-HC	Inductance ( $\mu$ H)	DCR Max. (Ohms)	Isat (A)	Irms (A)	SRF Typ. (MHz)
RL-3316-HC-R33M	0.33 $\pm$ 20%	0.002	20.00	16.00	300.0
RL-3316-HC-R68M	0.68 $\pm$ 20%	0.005	13.00	12.00	200.0
RL-3316-HC-1R0M	1.00 $\pm$ 20%	0.006	11.00	10.00	100.0
RL-3316-HC-1R5M	1.50 $\pm$ 20%	0.008	9.00	9.00	90.0
RL-3316-HC-2R2M	2.20 $\pm$ 20%	0.011	7.80	7.40	90.0
RL-3316-HC-2R7M	2.70 $\pm$ 20%	0.012	7.00	6.60	65.0
RL-3316-HC-3R3M	3.30 $\pm$ 20%	0.014	6.40	5.90	65.0
RL-3316-HC-4R7M	4.70 $\pm$ 20%	0.018	5.40	4.80	45.0
RL-3316-HC-5R6M	5.60 $\pm$ 20%	0.022	5.00	4.60	40.0
RL-3316-HC-6R8M	6.80 $\pm$ 20%	0.027	4.60	4.40	36.0
RL-3316-HC-8R2M	8.20 $\pm$ 20%	0.032	4.00	4.00	28.0
RL-3316-HC-100M	10.00 $\pm$ 20%	0.038	3.80	3.90	25.0

\* OTHER NON STANDARD INDUCTANCE VALUES ARE AVAILABLE TO MEET YOUR EXACT REQUIREMENTS

**NOTES:**

1. ELECTRICAL SPECIFICATIONS MEASURED AT 25°C
2. Isat - DC CURRENT THAT WILL CAUSE INDUCTANCE TO DROP BY 10%
3. Irms - CURRENT THAT CAUSES THE TEMPERATURE TO RISE APPROX. 40°C ABOVE AMBIENT OF 25°C
4. INDUCTANCE TESTED AT 100 kHz, 0.1 Vrms

