

RL-3308-S

SHIELDED SMD POWER INDUCTORS

DESCRIPTION

- Shielded SMD Power Inductor

ENVIRONMENTAL DATA

- Storage temperature range: -55°C to +130°C
- Operating temperature range: -40°C to +130°C

PACKAGING INFORMATION

- Packaging information: pg. 489

FEATURES & APPLICATIONS

- Low profile and shielded
- Low-resistance and high-energy storage
- Excellent as DC-DC converter used in notebook computers, smartphones, cell phones, step-up or step-down converters, and Flash memory

Verify operation with sample in actual circuit. Order samples at www.rencousa.com.

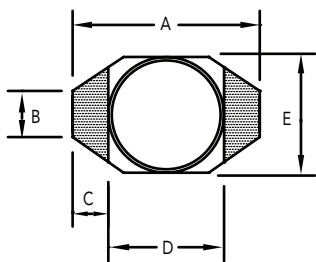
MECHANICAL DIMENSIONS

U.S. Standard (mm)

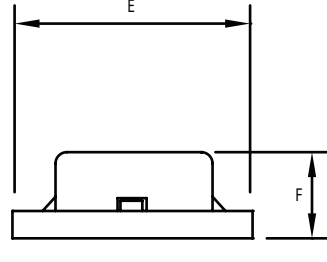
PART NUMBER	A ±0.008 (0.2)	B ±0.012 (0.3)	C (MAX.)	D ±0.008 (0.2)	E (MAX.)
RL-3308-S	0.50 (12.7)	0.30 (7.60)	0.40 (10.20)	0.09 (2.20)	0.51 (12.90)

PART NUMBER	PART WEIGHT	F (MAX.)	G (REF.)	H (REF.)	I (REF.)
RL-3308-S	1.05g (0.037oz)	0.12 (3.05)	0.11 (2.80)	0.12 (3.00)	0.29 (7.30)

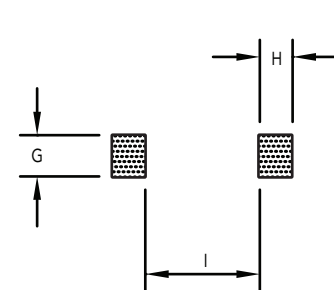
TOP VIEW



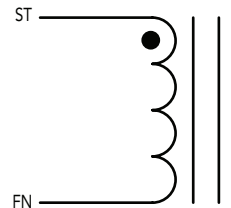
SIDE VIEW



RECOMMENDED LAND PATTERN



SCHEMATIC



RENCO ELECTRONICS INC.

595 International Place, Rockledge, FL 32955-4200 USA • www.rencousa.com • ISO 9001 Certified
Toll Free Engineering Hot Line: 800.645.5828 • P: 321.637.1000 • F: 321.637.1600



RL-3308-S

Renco Part No. RL-3308-S	Inductance (μ H)	DCR Max. (Ohms)	Isat (A)	Irms (A)	SRF Typ. (MHz)
RL-3308-S-2R2M	2.2 \pm 20%	0.045	4.20	3.50	90.0
RL-3308-S-3R0M	3.0 \pm 20%	0.062	3.60	3.00	70.0
RL-3308-S-3R9M	3.9 \pm 20%	0.070	3.40	2.80	60.0
RL-3308-S-4R7M	4.7 \pm 20%	0.078	3.00	2.50	50.0
RL-3308-S-6R8M	6.8 \pm 20%	0.100	2.60	2.20	50.0
RL-3308-S-100M	10.0 \pm 20%	0.145	2.20	2.00	38.0
RL-3308-S-120M	12.0 \pm 20%	0.185	2.00	1.75	29.0
RL-3308-S-150M	15.0 \pm 20%	0.200	1.80	1.50	30.0
RL-3308-S-180M	18.0 \pm 20%	0.270	1.60	1.40	25.0
RL-3308-S-220M	22.0 \pm 20%	0.300	1.50	1.30	22.0
RL-3308-S-270M	27.0 \pm 20%	0.400	1.30	1.20	18.0
RL-3308-S-330M	33.0 \pm 20%	0.450	1.20	1.10	17.0
RL-3308-S-390M	39.0 \pm 20%	0.560	1.10	0.95	17.0
RL-3308-S-470M	47.0 \pm 20%	0.650	1.05	0.80	15.0
RL-3308-S-560M	56.0 \pm 20%	0.680	1.00	0.75	14.0
RL-3308-S-680M	68.0 \pm 20%	0.800	0.90	0.70	12.0
RL-3308-S-820M	82.0 \pm 20%	1.200	0.85	0.65	11.0
RL-3308-S-101M	100.0 \pm 20%	1.400	0.80	0.60	9.5
RL-3308-S-121M	120.0 \pm 20%	1.520	0.70	0.55	8.5
RL-3308-S-151M	150.0 \pm 20%	1.800	0.65	0.50	8.0
RL-3308-S-181M	180.0 \pm 20%	2.200	0.60	0.45	7.0
RL-3308-S-221M	220.0 \pm 20%	2.200	0.50	0.40	6.5
RL-3308-S-271L	270.0 \pm 15%	3.100	0.45	0.35	5.5
RL-3308-S-331L	330.0 \pm 15%	3.600	0.40	0.30	5.2
RL-3308-S-391L	390.0 \pm 15%	4.600	0.35	0.25	5.0
RL-3308-S-471L	470.0 \pm 15%	5.100	0.30	0.00	4.5

NOTES:

1. Isat - DC CURRENT THAT WILL CAUSE INDUCTANCE TO DROP BY 10%
2. Irms - CURRENT THAT CAUSES THE TEMPERATURE TO RISE APPROX. 40°C ABOVE AMBIENT OF 25°C
3. ELECTRICAL SPECIFICATIONS MEASURED AT 25°C
4. INDUCTANCE TESTED AT 100 kHz, 0.1 Vrms



RENCO ELECTRONICS INC.

595 International Place, Rockledge, FL 32955-4200 USA • www.rencousa.com • ISO 9001 Certified
Toll Free Engineering Hot Line: 800.645.5828 • P: 321.637.1000 • F: 321.637.1600

