

RL-2228

PC MOUNT POWER INDUCTORS

DESCRIPTION

- PC Mount Power Inductors

ENVIRONMENTAL DATA

- Storage temperature range: -55°C to +130°C
- Operating temperature range: -40°C to +130°C

PACKAGING INFORMATION

- Packaging information: pg. 493

FEATURES & APPLICATIONS

- Compact series of high current inductors ideally suited for noise filtering in switching regulated power supplies, power filter networks, power amplifiers, SCR and TRIAC control circuits
- Core construction provides the highest saturation current available in low cost power chokes

Verify operation with sample in actual circuit. Order samples at www.rencousa.com.

MECHANICAL DIMENSIONS

U.S. Standard (mm)

NUMBER	A (MAX.)	B ± 0.015 (0.38)	C (MAX.)	D (MAX.)	E ± 0.010 (0.25)
RL-2228	1.60 (40.6)	1.400 (35.56)	0.64 (16.3)	0.64 (16.3)	0.300 (7.62)

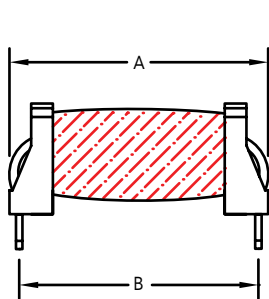
PART WEIGHT

18.0g (0.64oz)

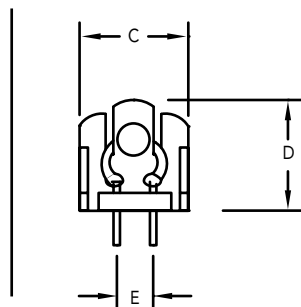
F ± 0.010 (0.25) G ± 0.015 (0.38)

0.300 (7.62) 1.400 (35.56)

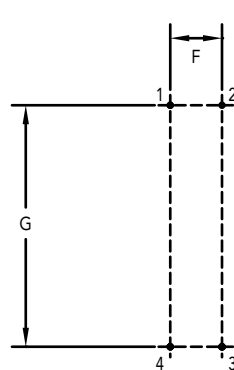
FRONT VIEW



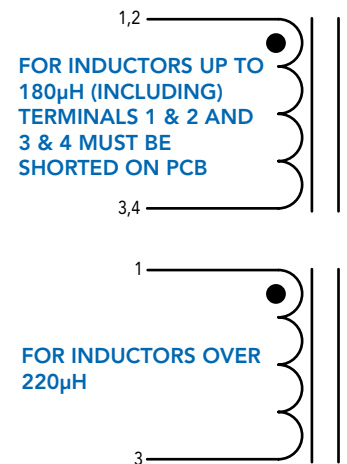
SIDE VIEW



RECOMMENDED PCB LAOUT



SCHEMATIC



REV 05/2022



RENCO ELECTRONICS INC.

595 International Place, Rockledge, FL 32955-4200 USA • www.rencousa.com • ISO 9001 Certified
Toll Free Engineering Hot Line: 800.645.5828 • P: 321.637.1000 • F: 321.637.1600

RL-2228

Renco Part No. RL-2228	Inductance (μ H)	DCR Max. (Ohms)	Isat (A)	Irms (A)
RL-2228-3.9	3.90	0.008	32.70	10.0
RL-2228-4.7	4.70	0.008	30.30	10.0
RL-2228-5.6	5.60	0.010	28.30	10.0
RL-2228-6.8	6.80	0.010	25.00	10.0
RL-2228-8.2	8.20	0.010	22.40	10.0
RL-2228-10	10.0	0.011	20.20	10.0
RL-2228-12	12.0	0.012	19.30	10.0
RL-2228-15	15.0	0.014	17.00	10.0
RL-2228-18	18.0	0.019	15.70	8.0
RL-2228-22	22.0	0.023	14.20	8.0
RL-2228-27	27.0	0.024	12.50	8.0
RL-2228-33	33.0	0.026	11.50	8.0
RL-2228-39	39.0	0.028	10.60	8.0
RL-2228-47	47.0	0.041	9.60	6.3
RL-2228-56	56.0	0.045	8.80	6.3
RL-2228-68	68.0	0.053	8.00	6.3
RL-2228-82	82.0	0.059	7.30	6.3
RL-2228-100	100.0	0.080	6.50	5.0
RL-2228-120	120.0	0.084	6.00	5.0
RL-2228-150	150.0	0.094	5.40	5.0
RL-2228-180	180.0	0.127	4.90	4.0
RL-2228-220	220.0	0.136	4.40	3.2
RL-2228-270	270.0	0.149	4.00	3.2
RL--2228-330	330.0	0.164	3.60	3.2
RL-2228-470	470.0	0.241	3.00	2.5
RL-2228-560	560.0	0.340	2.80	2.0
RL-2228-680	680.0	0.380	2.50	2.0
RL-2228-820	820.0	0.420	2.30	2.0
RL-2228-1000	1000.0	0.460	2.10	2.0
RL-2228-1200	1200.0	0.650	1.90	1.6
RL-2228-1500	1500.0	0.720	1.70	1.6
RL-2228-1800	1800.0	0.790	1.50	1.6
RL-2228-2200	2200.0	1.100	1.40	1.3
RL-2228-2700	2700.0	1.500	1.30	1.0
RL-2228-3300	3300.0	1.700	1.10	1.0
RL-2228-3900	3900.0	1.800	1.05	1.0
RL-2228-4700	4700.0	2.500	0.96	0.8
RL-2228-5600	5600.0	2.800	0.88	0.8
RL-2228-6800	6800.0	3.800	0.80	0.63
RL-2228-8200	8200.0	4.200	0.73	0.63

Renco Part No. RL-2228	Inductance (μ H)	DCR Max. (Ohms)	Isat (A)	Irms (A)
RL-2228-10000	10000.0	4.700	0.66	0.63
RL-2228-12000	12000.0	6.400	0.60	0.50
RL-2228-15000	15000.0	7.200	0.54	0.50
RL-2228-18000	18000.0	9.900	0.50	0.40
RL-2228-22000	22000.0	11.000	0.44	0.40
RL-2228-27000	27000.0	15.200	0.40	0.32
RL-2228-33000	33000.0	16.800	0.36	0.32
RL-2228-39000	39000.0	23.200	0.33	0.25
RL-2228-47000	47000.0	25.500	0.30	0.25
RL-2228-56000	56000.0	27.800	0.28	0.25
RL-2228-68000	68000.0	39.300	0.25	0.20
RL-2228-82000	82000.0	43.200	0.23	0.20
RL-2228-100000	100000.0	59.800	0.21	0.16
RL-2228-120000	120000.0	65.500	0.19	0.16
RL-2228-150000	150000.0	73.200	0.17	0.16

NOTES:

1. ELECTRICAL SPECIFICATIONS MEASURED AT 25°C
2. Isat - DC CURRENT THAT WILL CAUSE INDUCTANCE TO DROP BY 5%
3. Irms - CURRENT THAT CAUSES THE TEMPERATURE TO RISE APPROX. 40°C ABOVE AMBIENT OF 25°C
4. INDUCTANCE \pm 10% TESTED AT 10 kHz, 0.1 Vrms



RENCO ELECTRONICS INC.

595 International Place, Rockledge, FL 32955-4200 USA • www.rencousa.com • ISO 9001 Certified
Toll Free Engineering Hot Line: 800.645.5828 • P: 321.637.1000 • F: 321.637.1600

REV 05/2022

